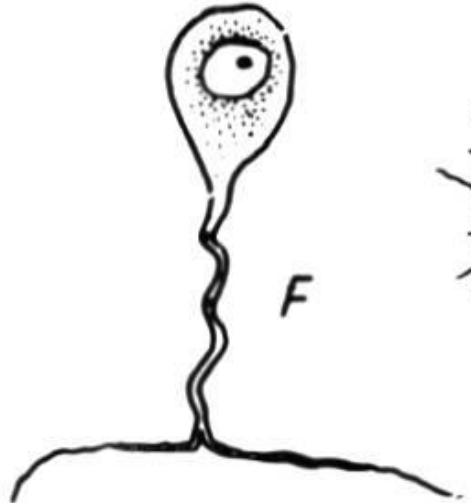
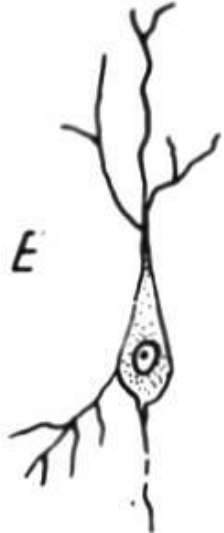
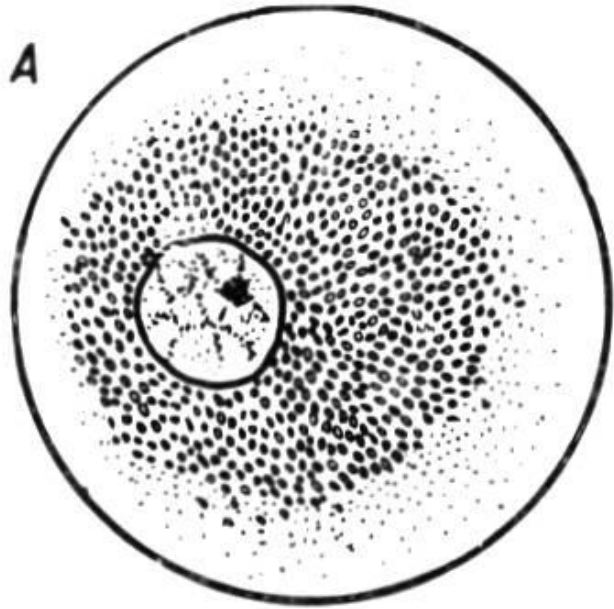


Az állatok és az ember szövetei

(Az összeállításban látható mikroszkópi fényképek festett metszetekről készültek.)

Sejtek mérete azonos nagyításonál



A petesejt

B spermium

C fehérvérsejt

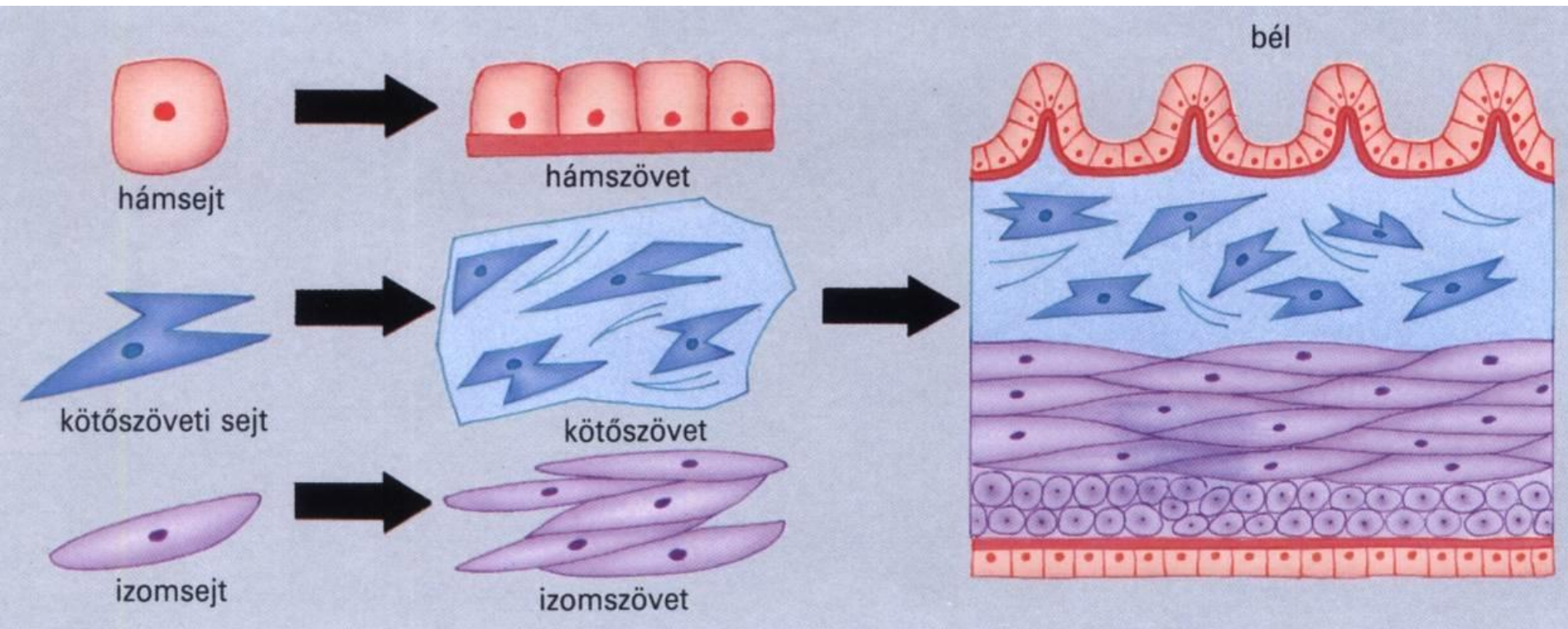
D simaizomsejt

E idegsejt agykéregből

F érzőidegsejt

G csontsejt

Többféle szövet épít fel egy szervet



A hámszövetek csoportosítása

Funkció szerint:

- Fedőhám
- Mirigyhám
- Felszívóhám
- Érzékhám
- Pigmenthám

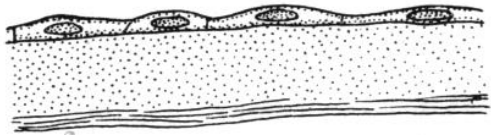
Sejtek alakja szerint:

- Laphám
- Köbhám
- Hengerhám

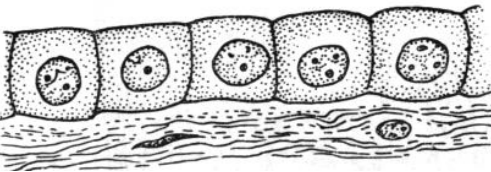
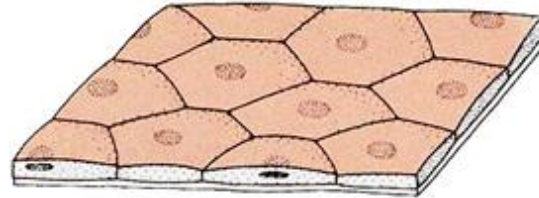
Sejtrétegek száma szerint:

- Egyrétegű hám
- Többrétegű hám

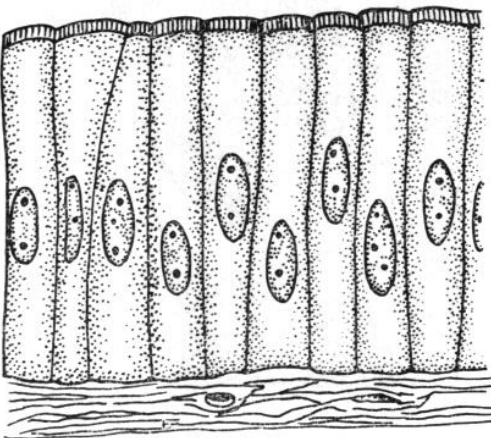
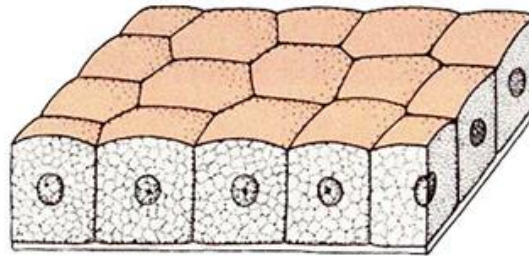
EGYRÉTEGŰ FEDŐHÁMOK



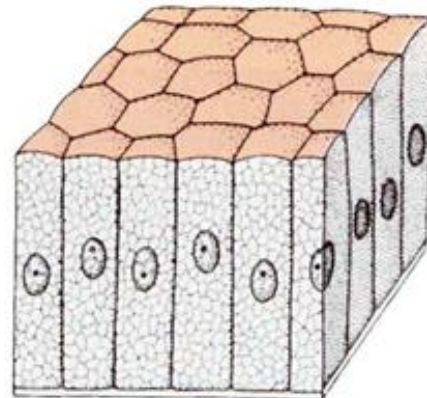
laphám



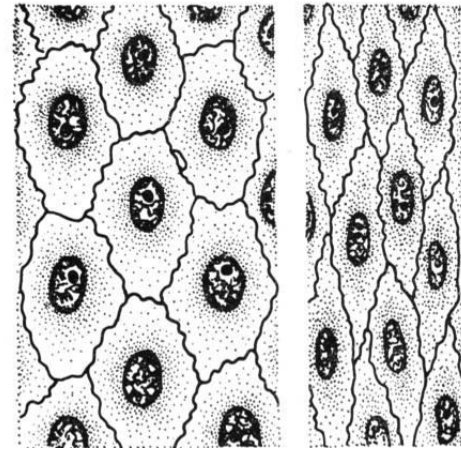
köbhám



hengerhám



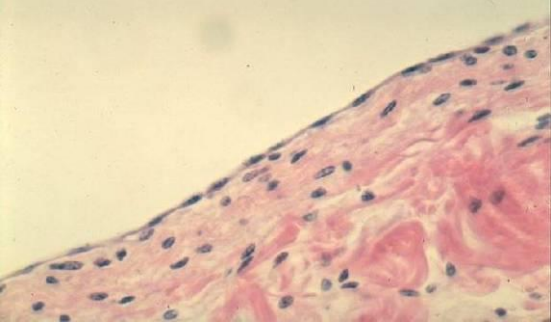
Egyrétegű laphám



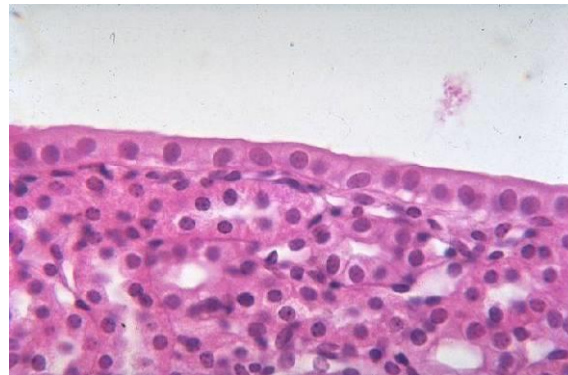
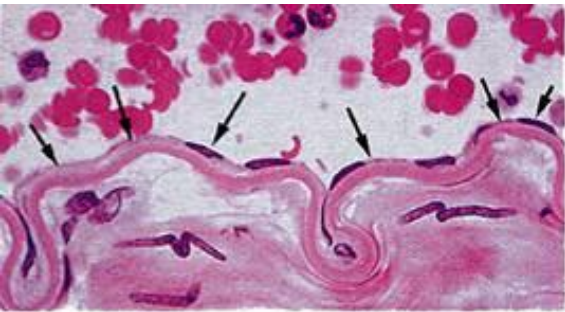
véna

artéria

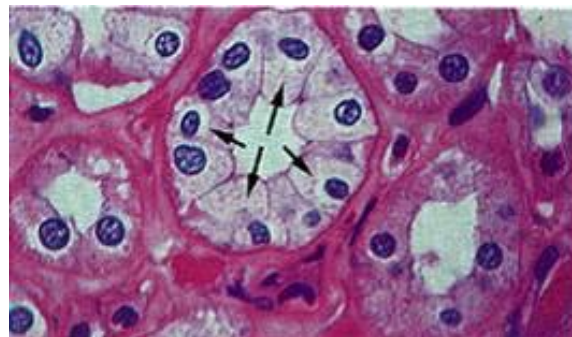
felülnézetben



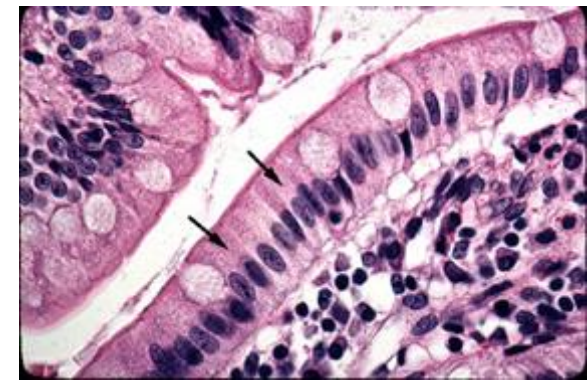
egyrétegű laphám



egyrétegű köbhám



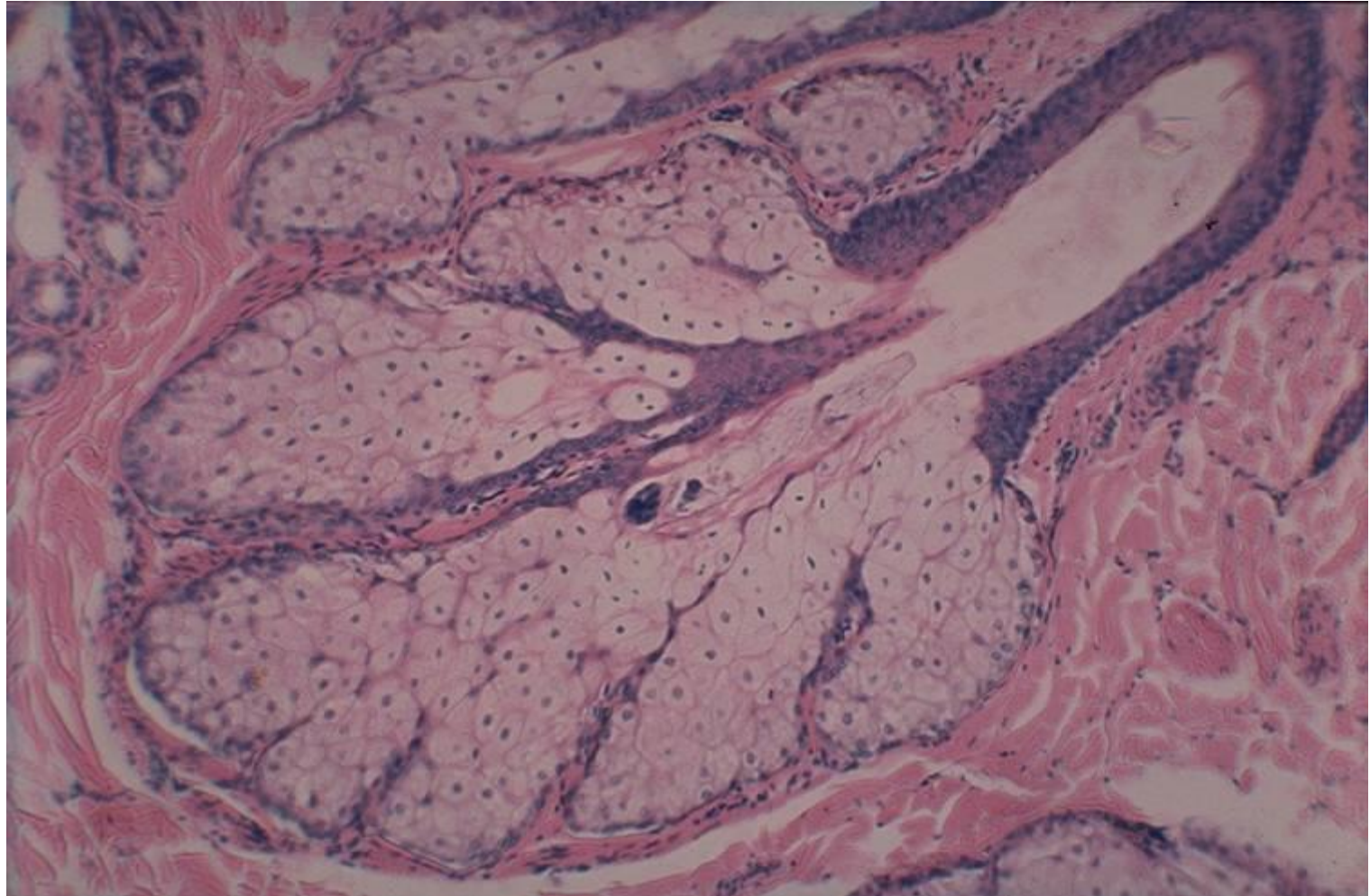
egyrétegű hengerhám



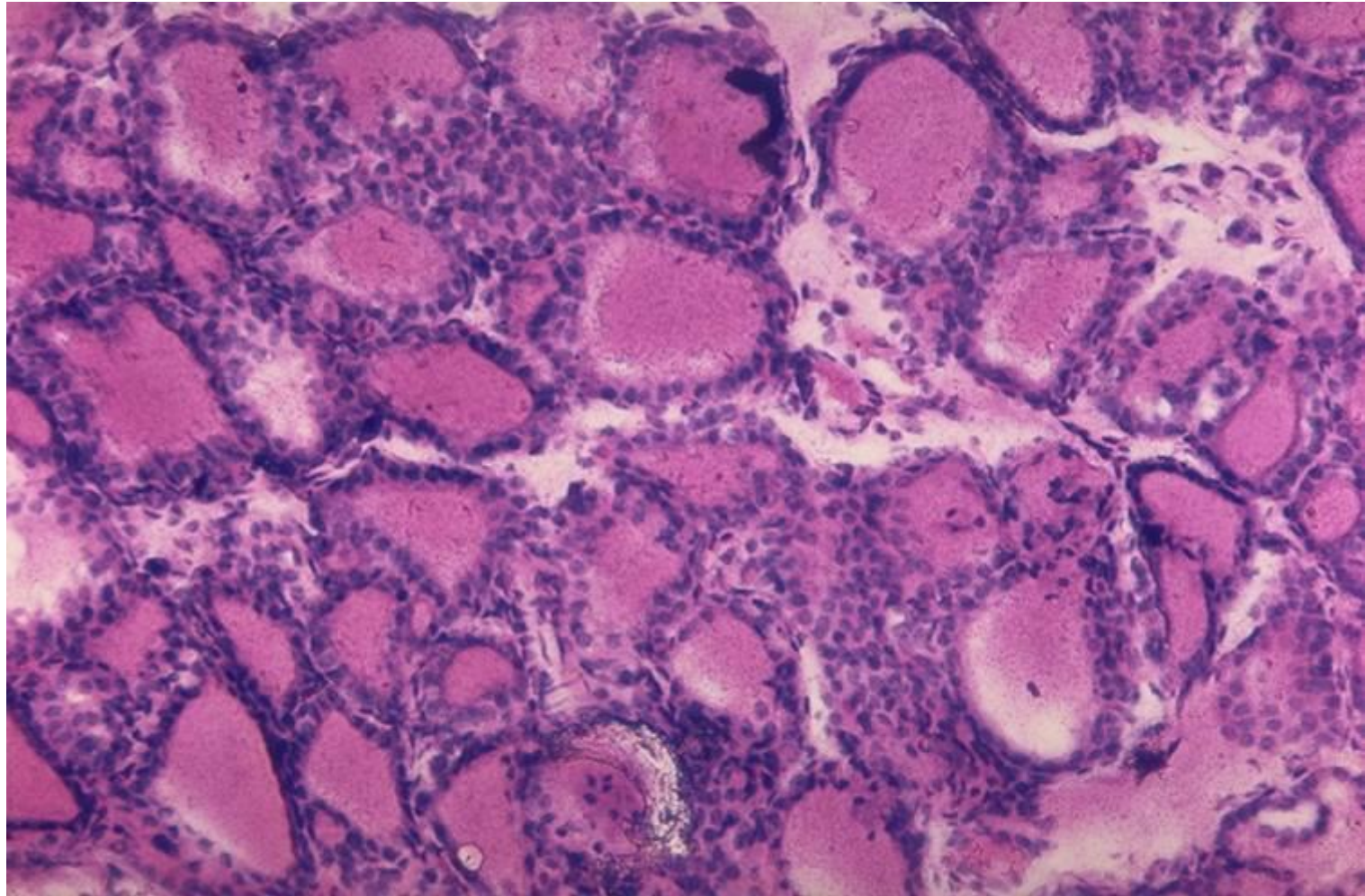
Bélboholy



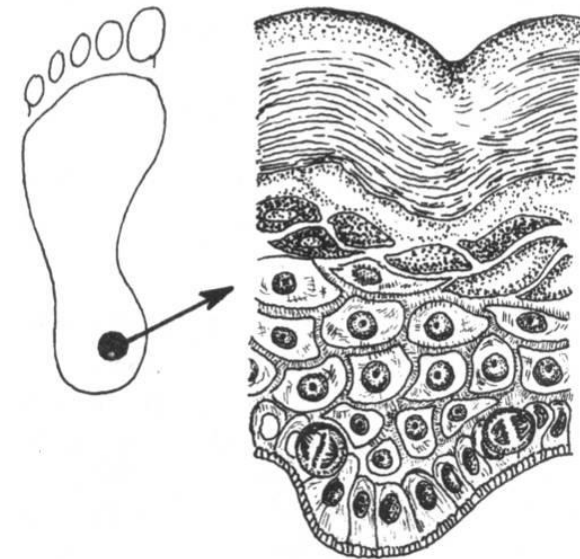
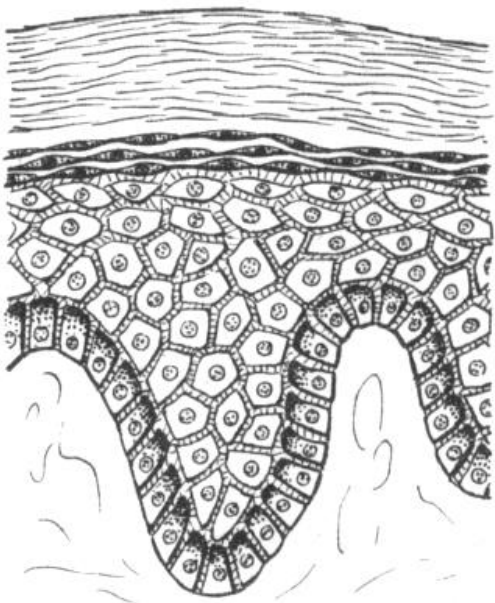
Faggyúmirigy



Belső elválasztású mirigy (pajzsmirigy)



Többrétegű elszarusodó laphám



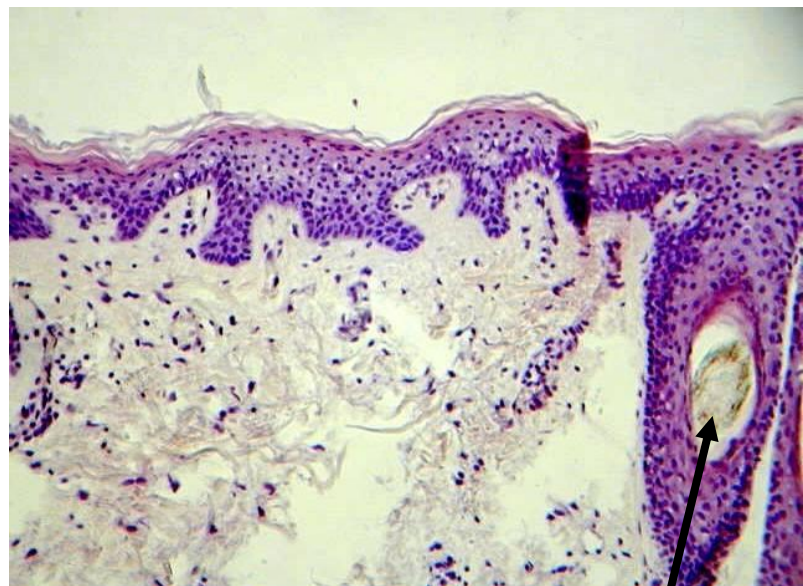
Verejtékm. csöve



Emberi ujjbőr

szaruréteg
élő hámsejtek

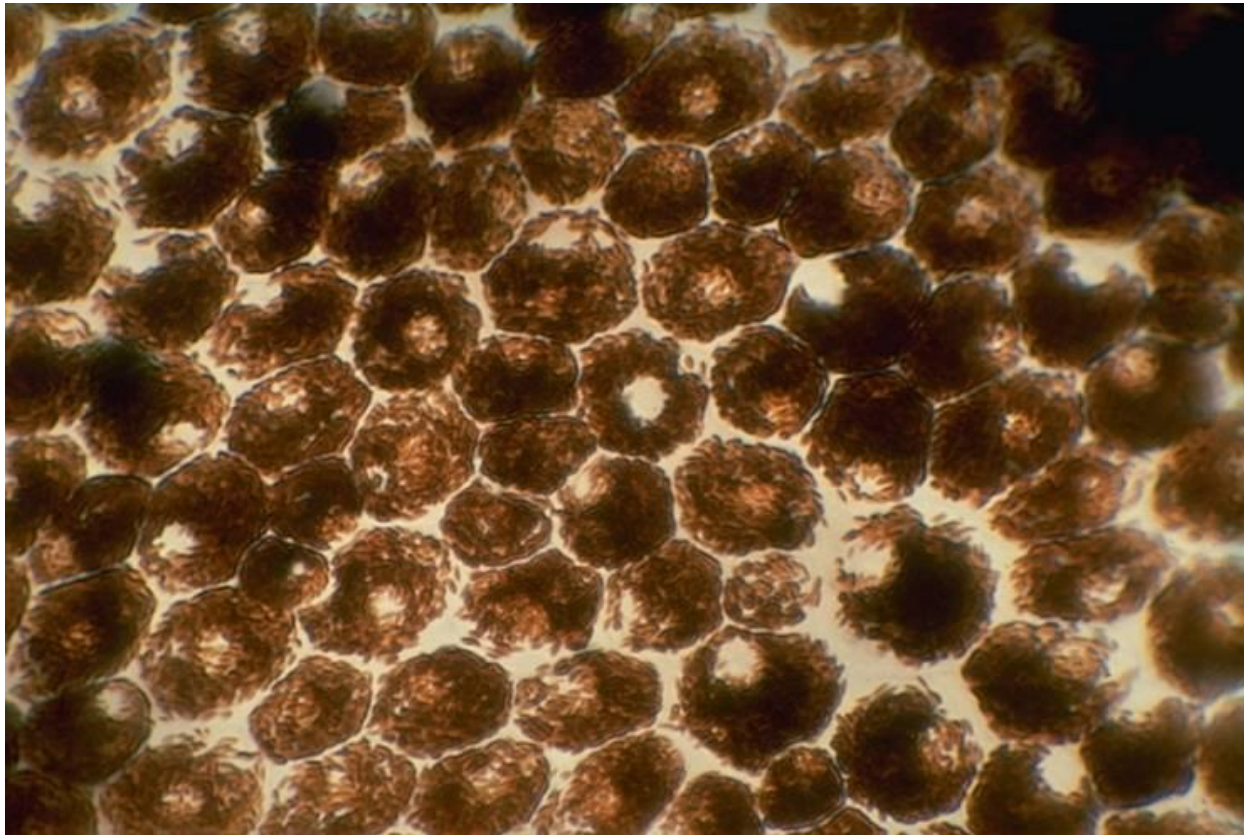
Irha



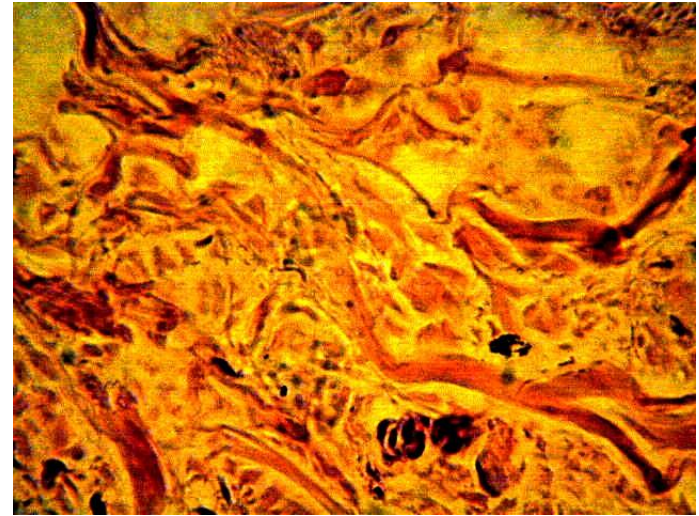
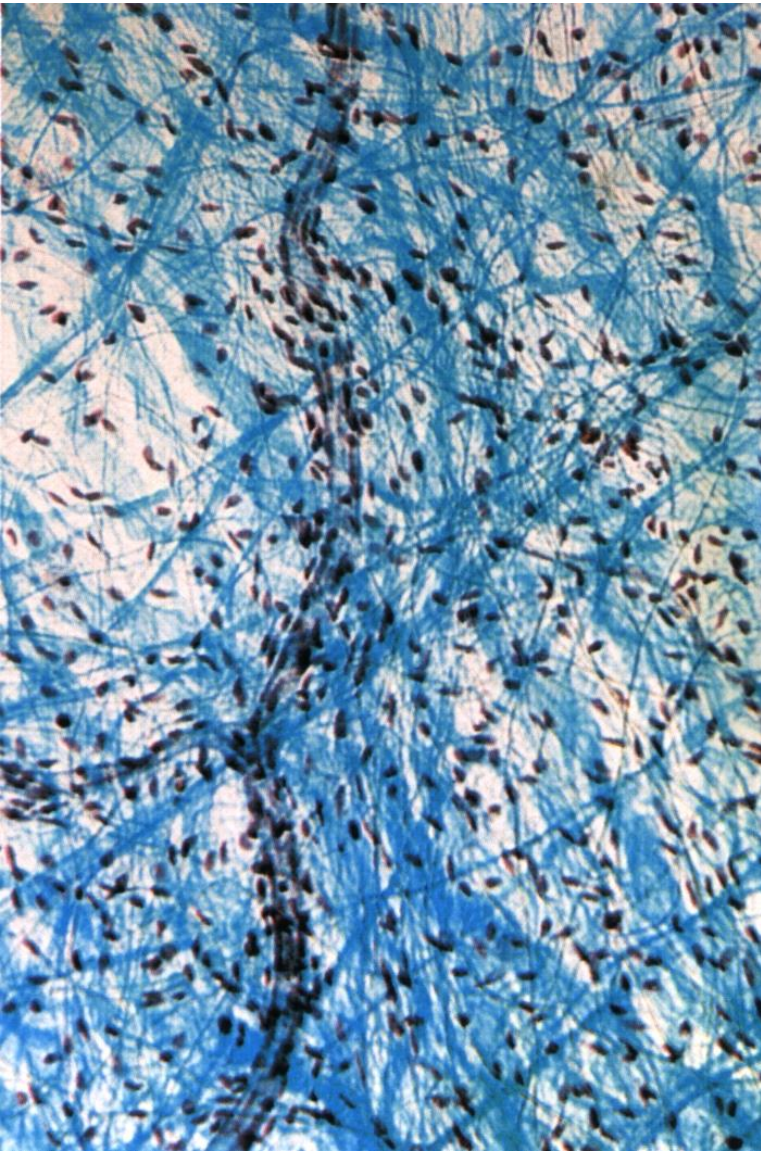
Emberi fejbőr

átmetszett hajszál
hajtüszőben

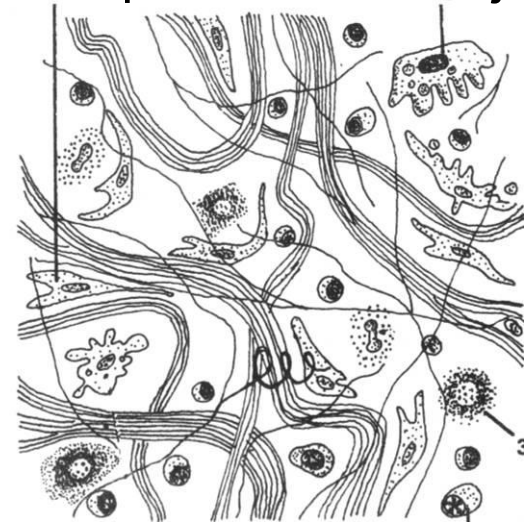
Pigmenthám (szem)



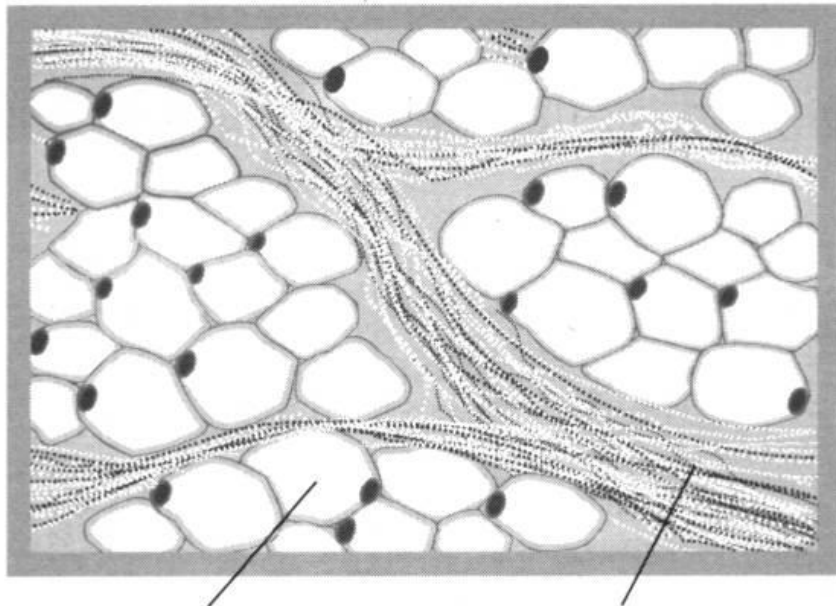
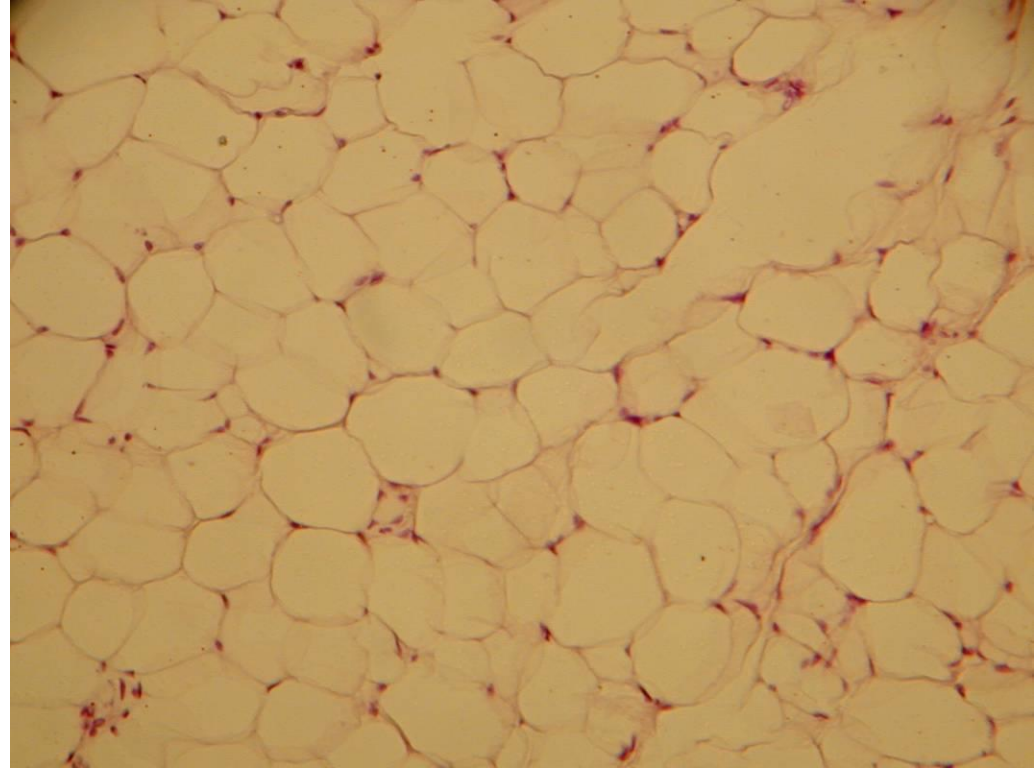
Lazarostos kötőszövet



rostképző s. falósejt

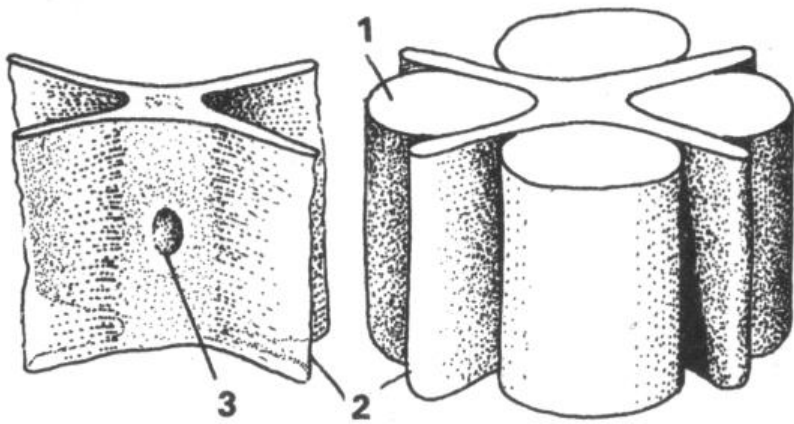


Zsírszövet

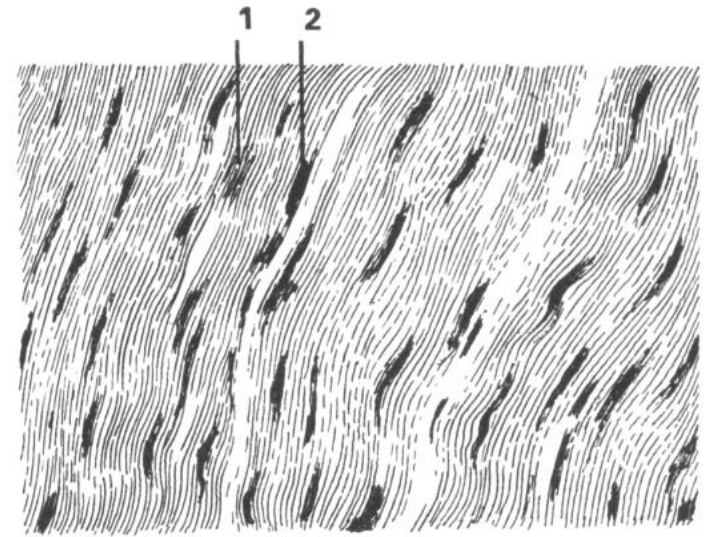


zsírsejt

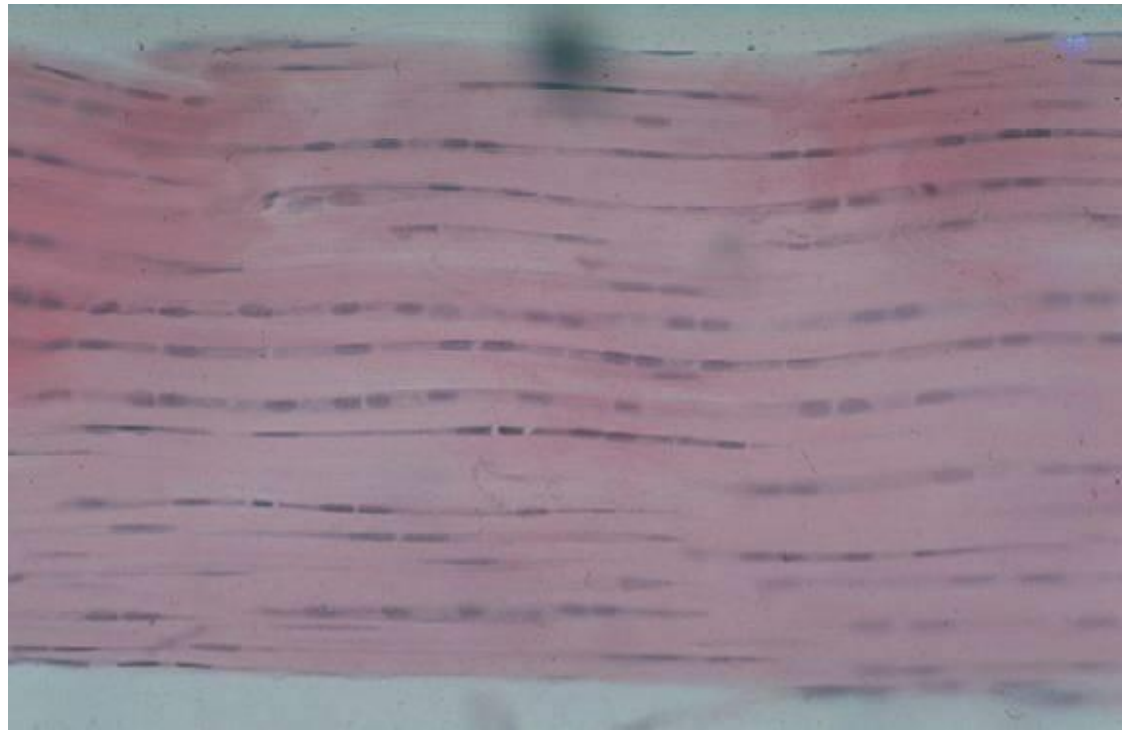
kötőszöveti rostok

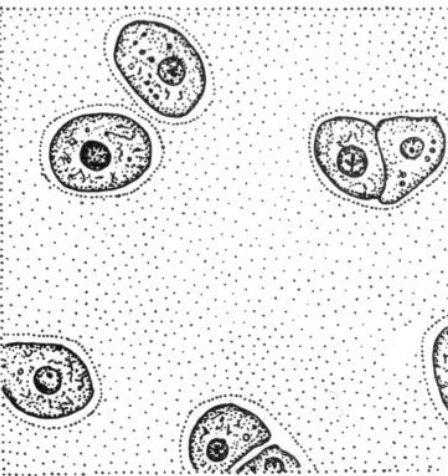


- 1 rost
- 2 sejt
- 3 sejtmag

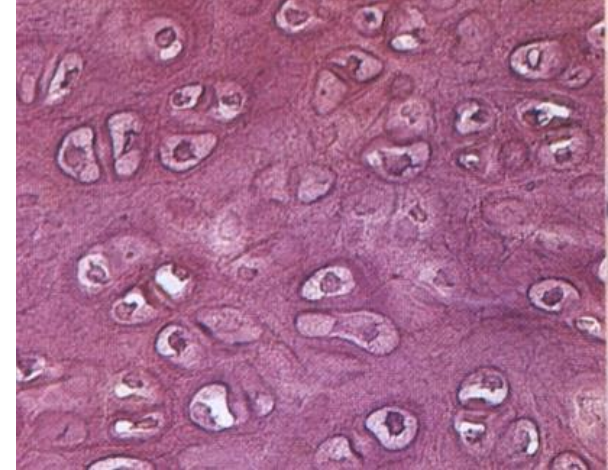


Tömöttrostos kötőszövet (ínszövet)

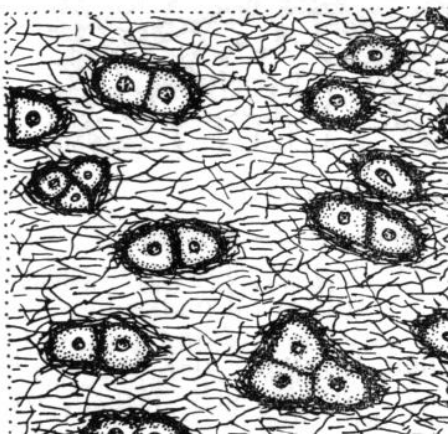
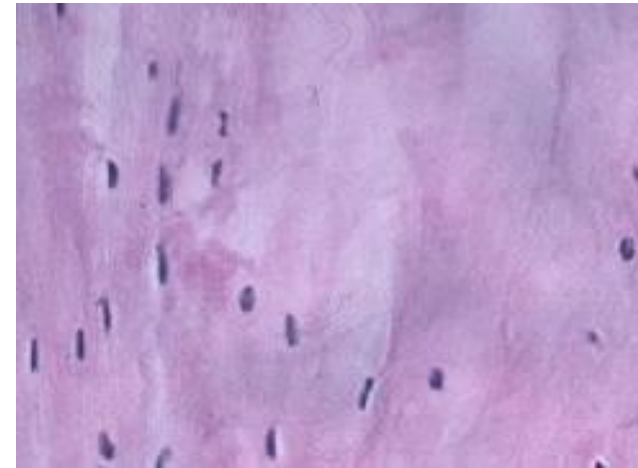




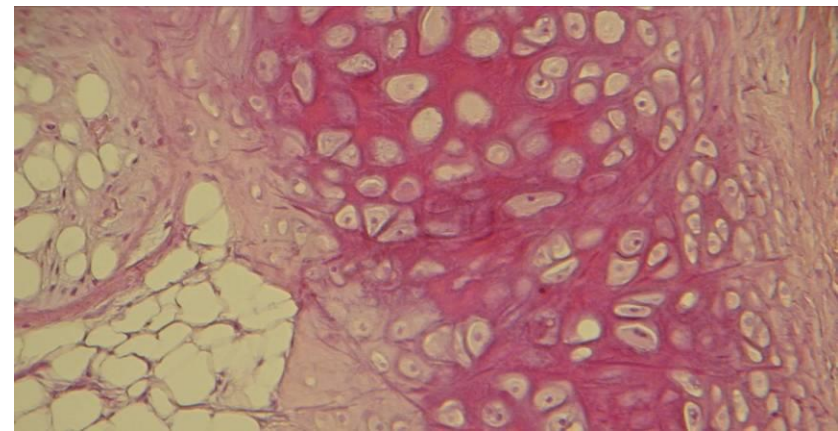
Üvegporc



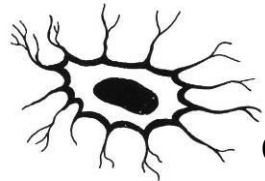
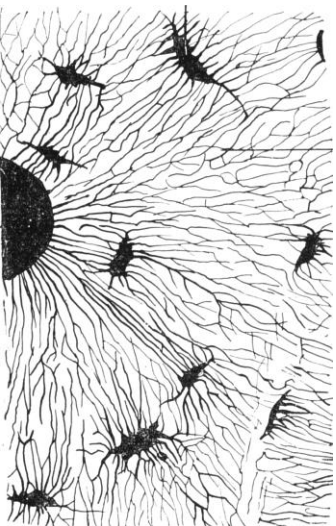
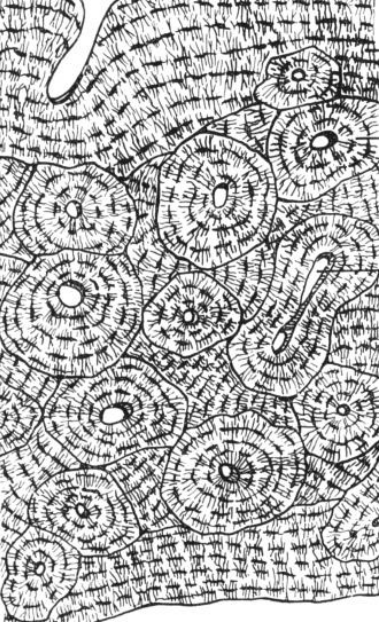
Kollagén rostos
porc



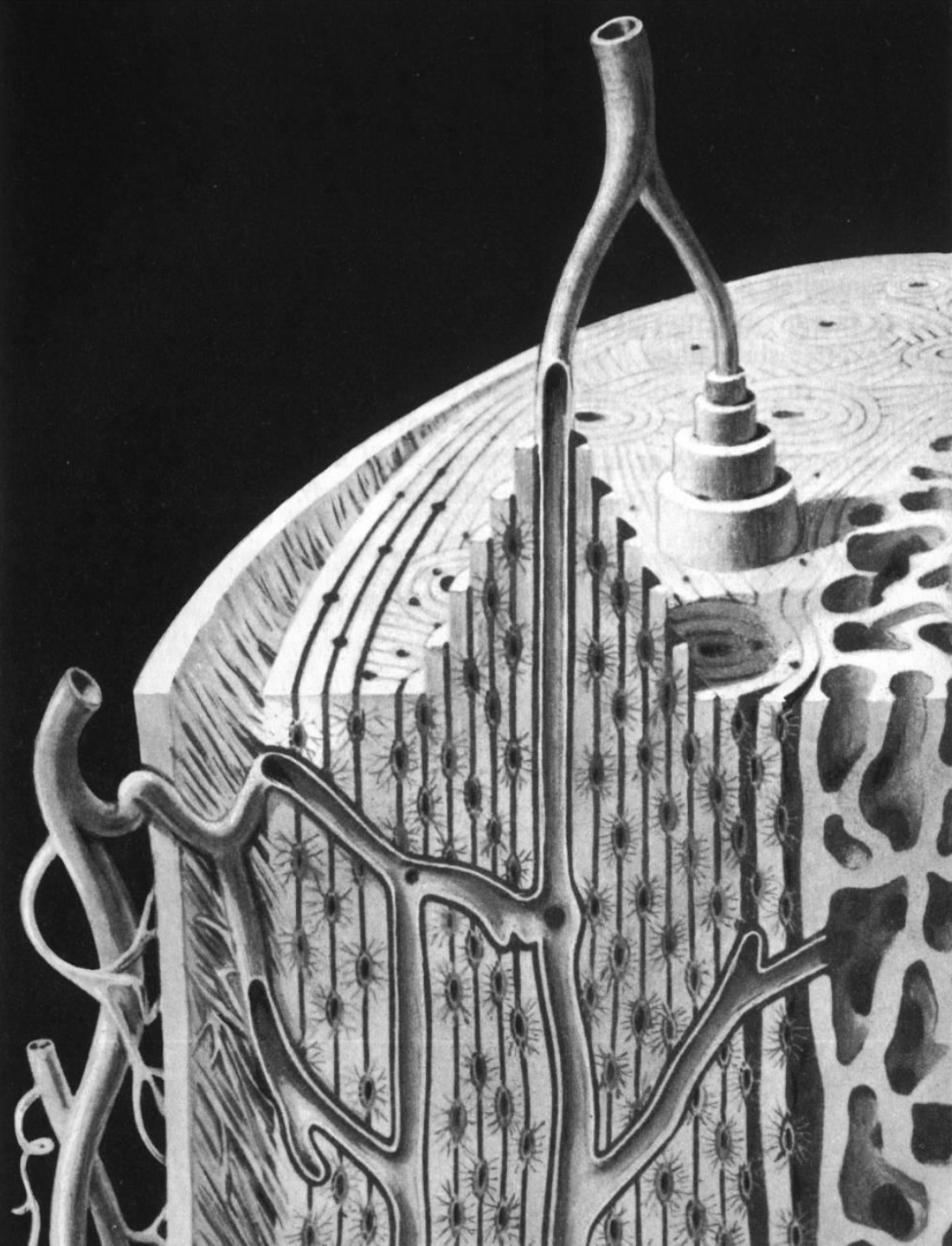
Rugalmas rostos porc
(fülkagyló)



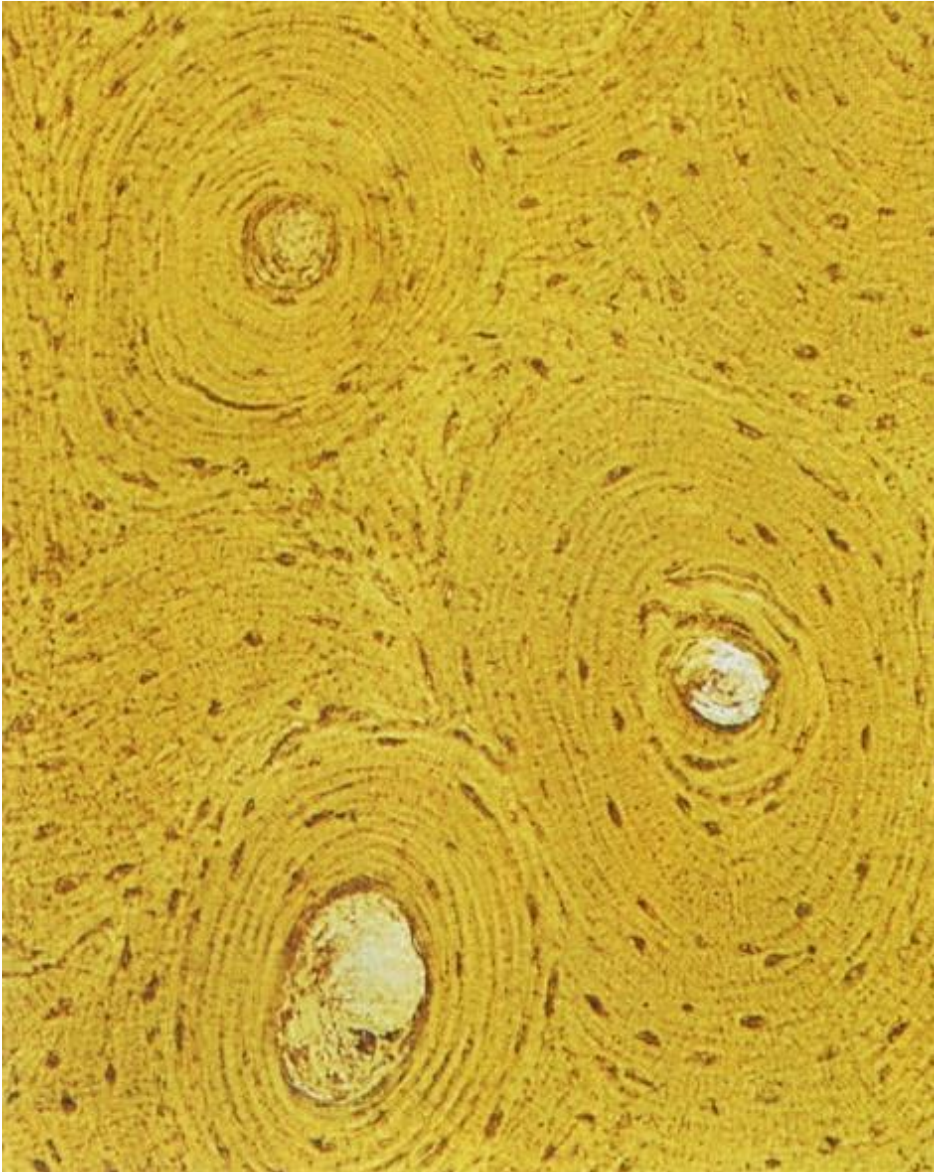
Csont- szövet



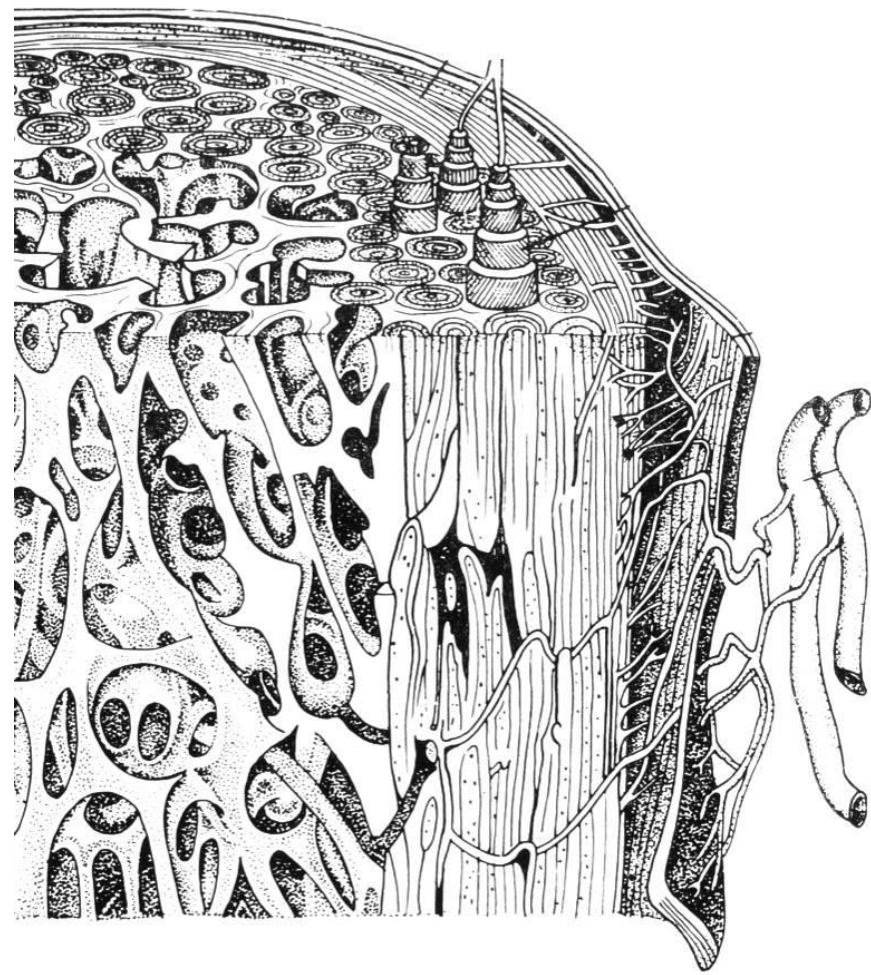
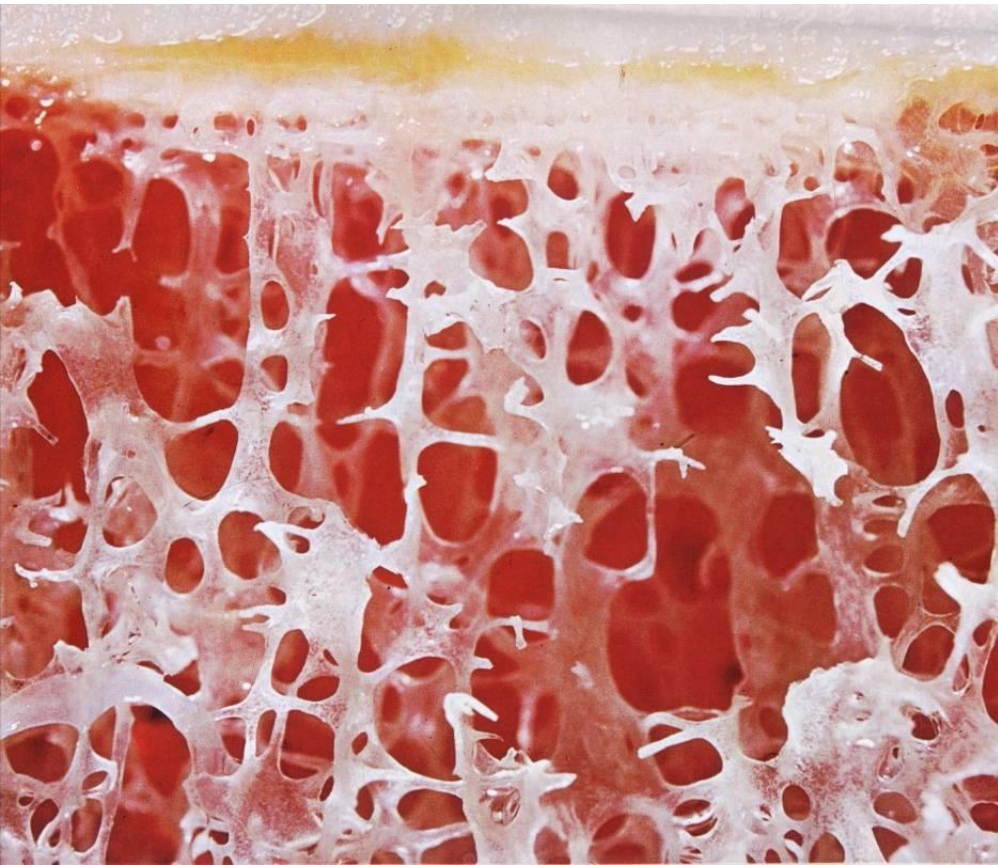
csontsejt



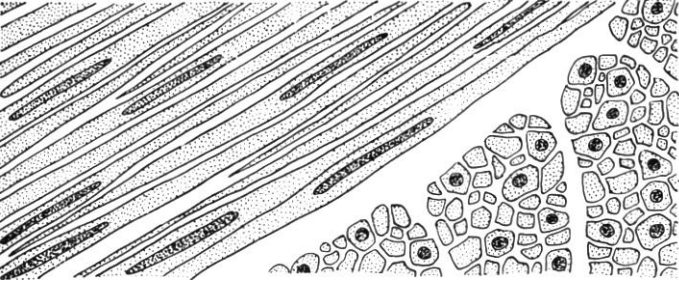
Csont-szövet



A csont szerkezete



Simaizomszövet



hosszm.

keresztmetszet

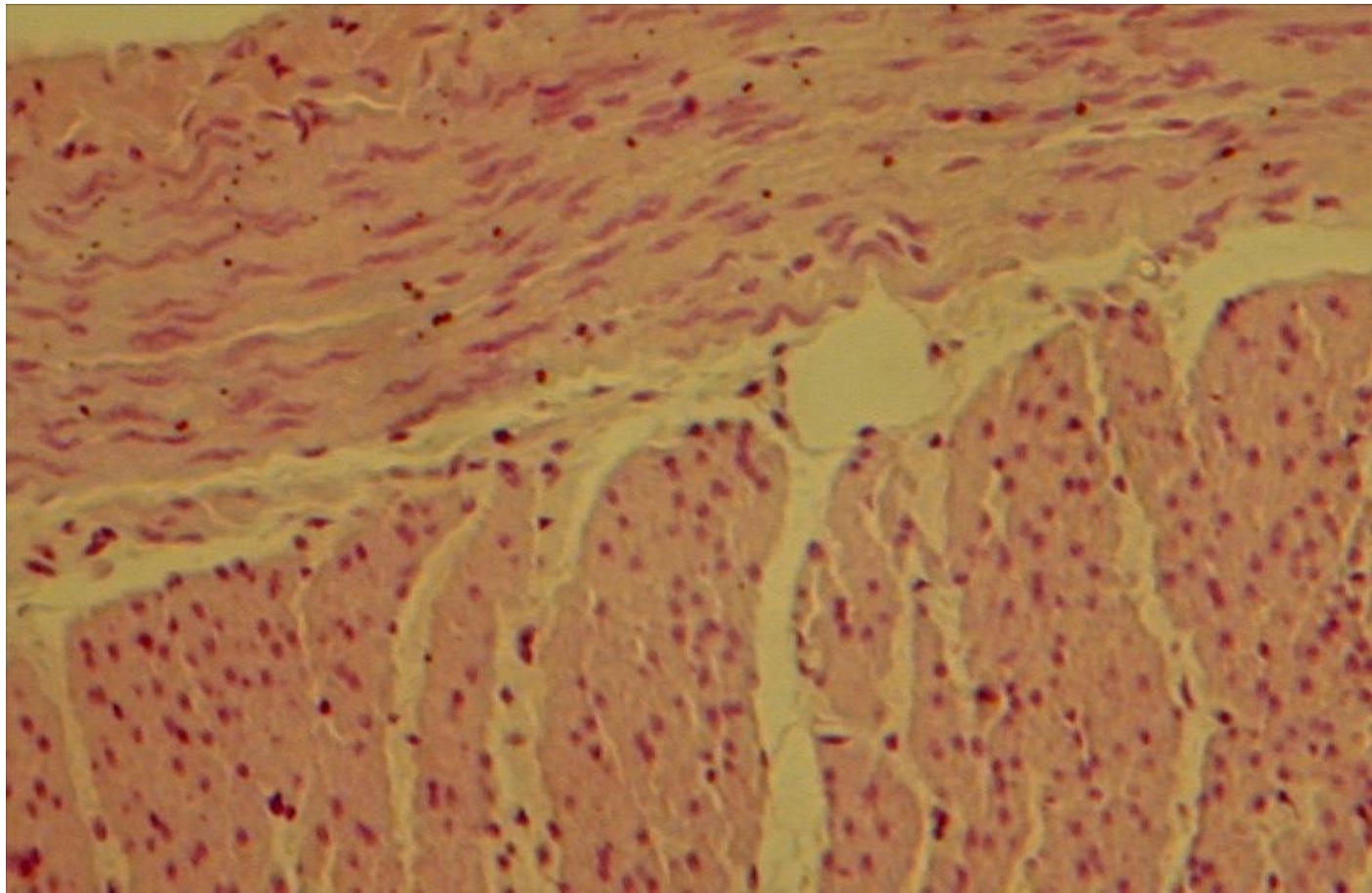


izolált simaizomsejt

sejtmag

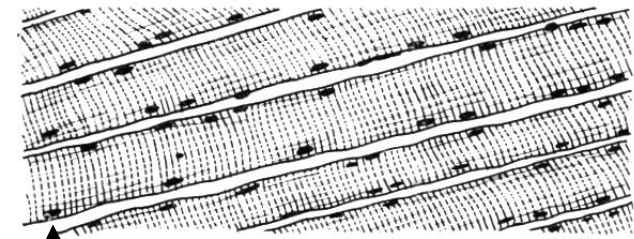
Gyomorból

hosszmetszet

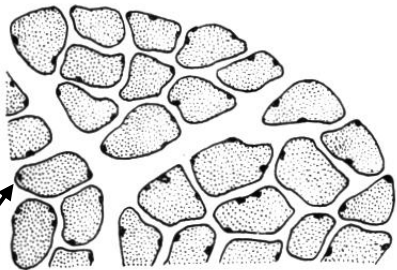


keresztmetszet

Harántcsíkolt izomszövet

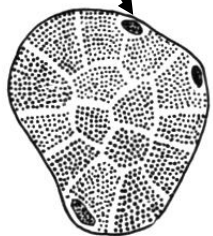


hosszmetszet



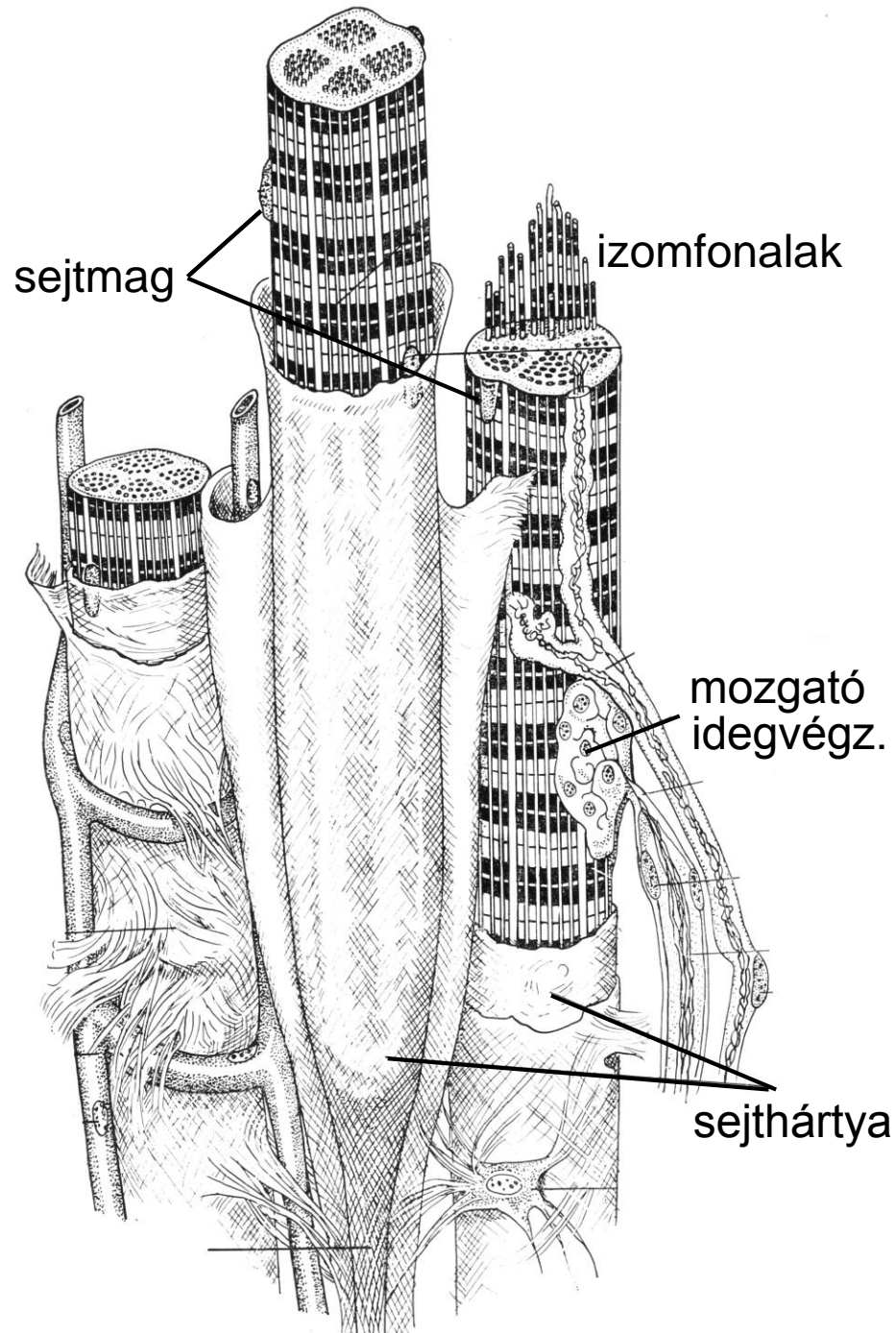
keresztmetszet

sejtmag

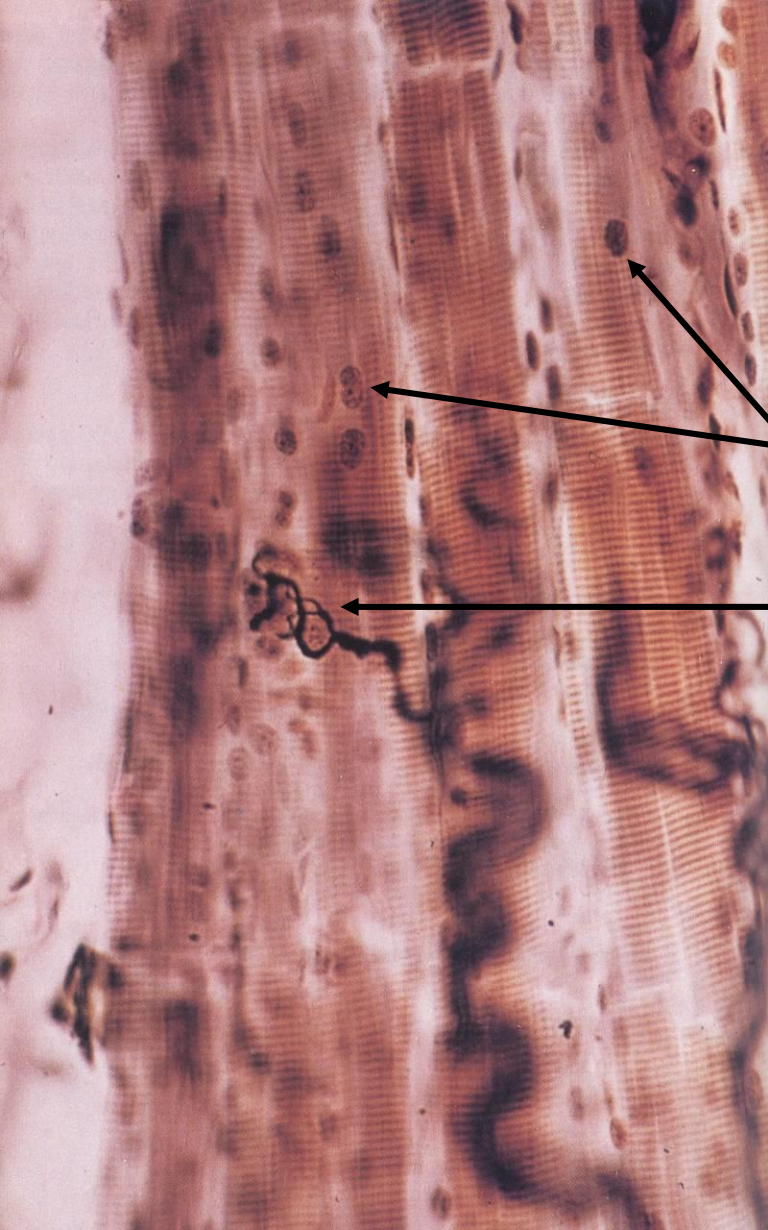


egy izomrost

keresztmetszete



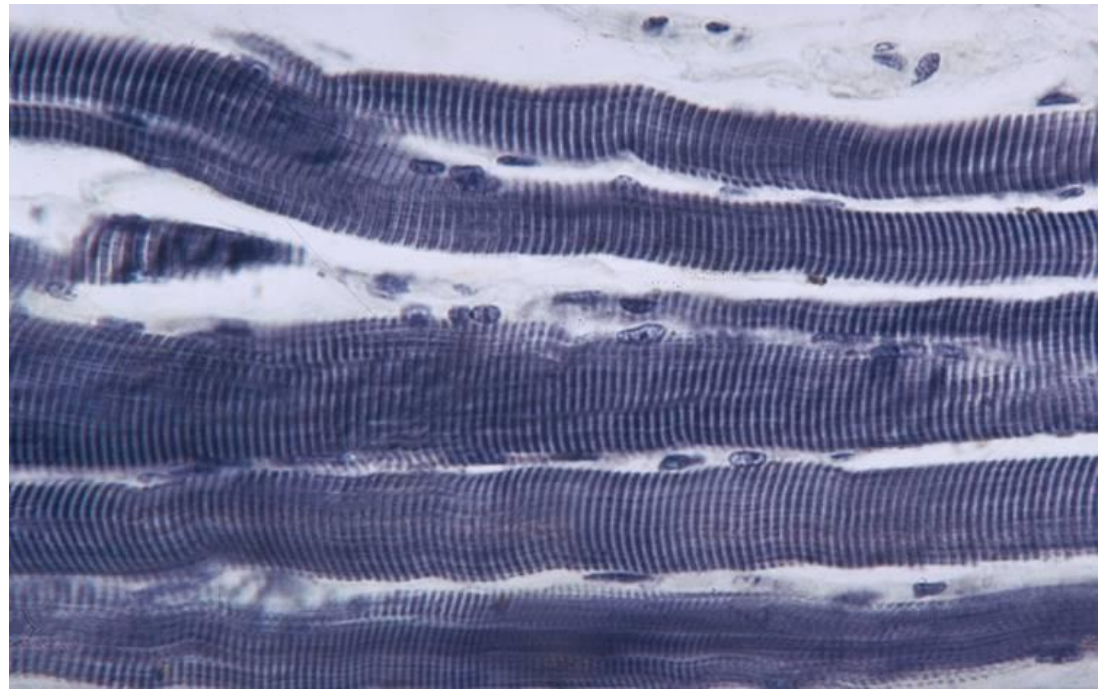
Harántcsíktolt izomszövet



sejtmag

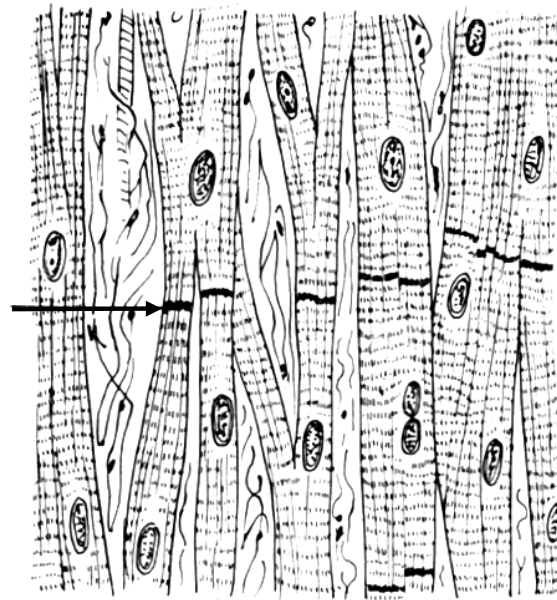
mozgató
idegvégződés

emberből



Szívizomszövet

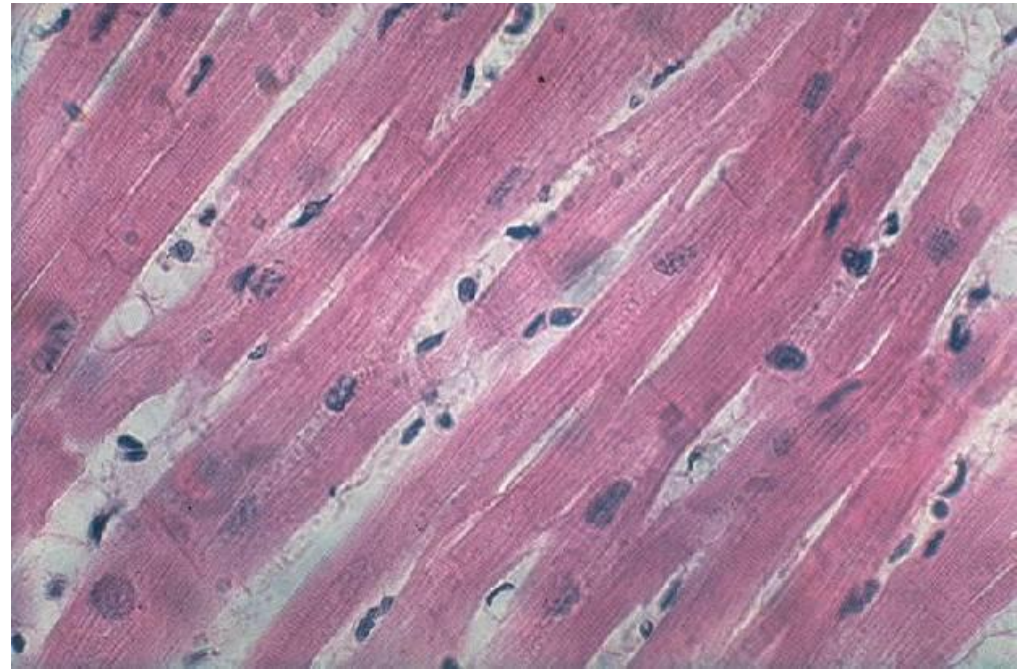
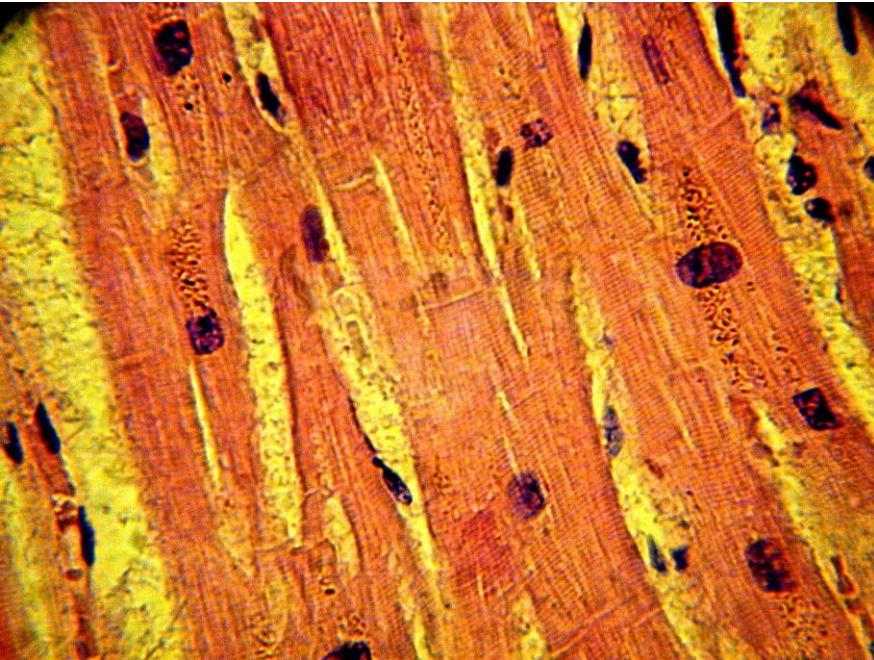
Ébert-féle vonal



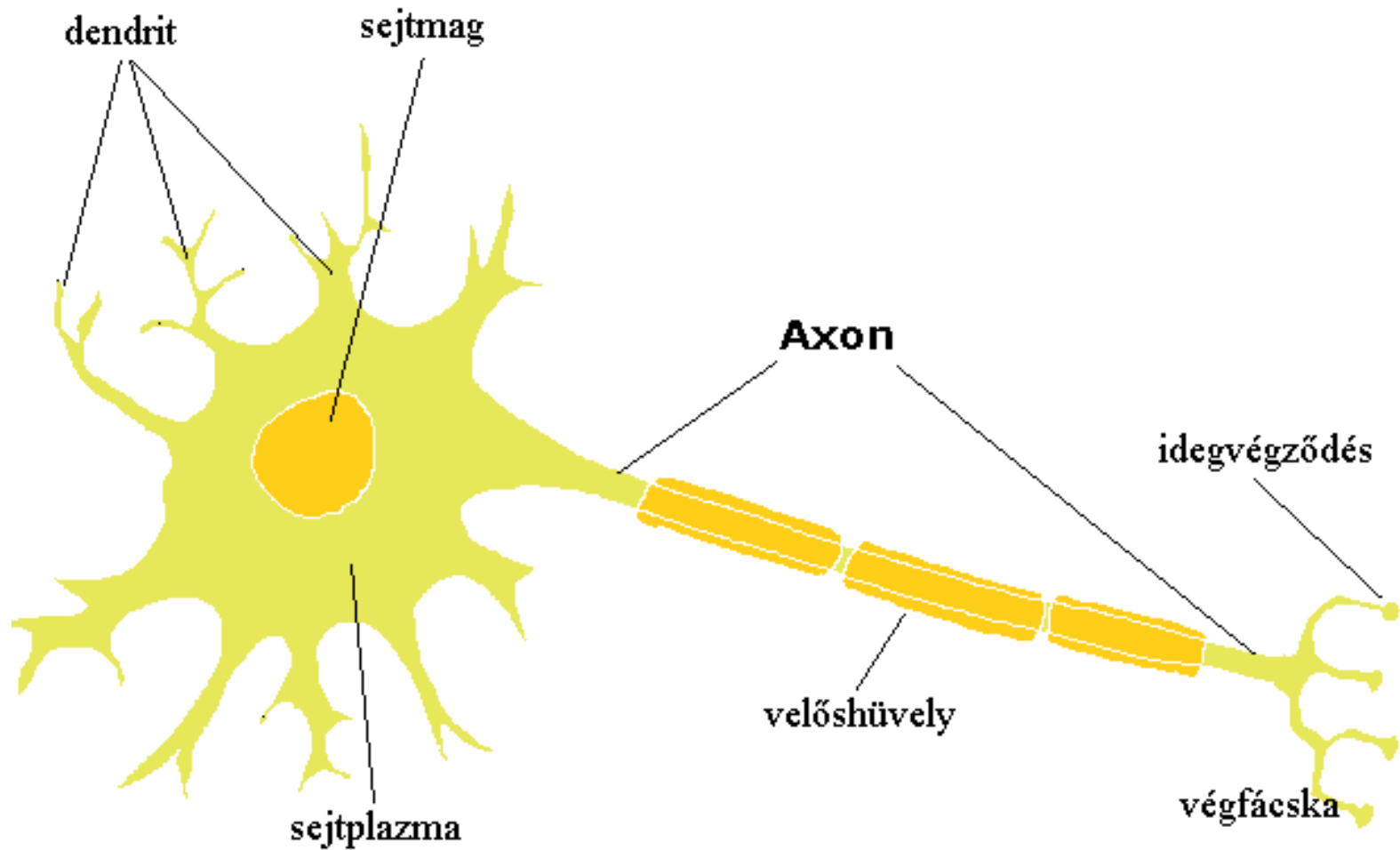
hosszmetszet



keresztmetszet



Idegsejt (neuron)



Idegsejtek típusai



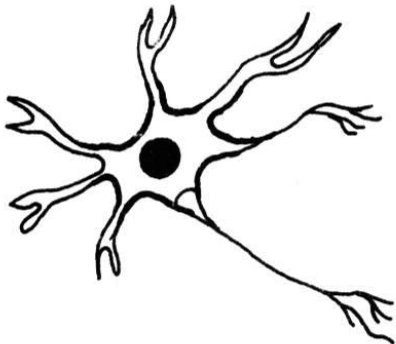
Egynyúlványú neuron (egy axonnal)



Érzőidegsejt (egy elágazó axonnal)



Kétnyúlványú n. (két axonnal)



Soknyúlványú n. (sok dendrittel és egy axonnal)

Idegszövet

